



NEW BOAT · SASGA YACHTS

## MENORQUÍN 34 HT



REF: SYM34 · OPPORTUNITY · 2024 BOAT

---

MENORQUÍN 35 HARD TOP · **375.000 €** (plus taxes)

---

### **Elegance, efficiency and comfort in a compact family cruiser**

This **Menorquín 34 Hard Top**, equipped with two **Volvo Penta D4-270 engines (270 HP each)**, is the most compact model in the range, designed to offer maximum habitability and exceptionally safe navigation with optimised maintenance. True to the identity of **Sasga Yachts**, it combines the classic lines of the authentic "llaut" with cutting-edge nautical technology and handcrafted finishes in high-quality wood.

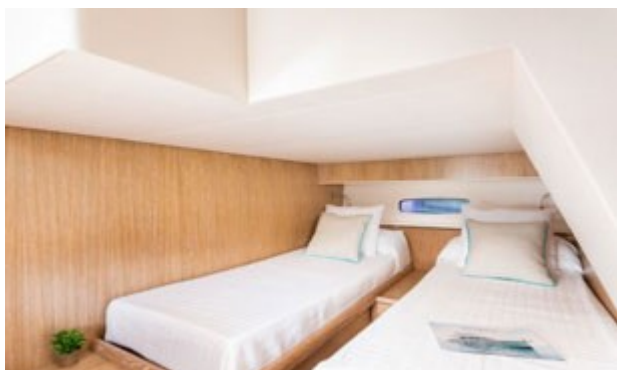
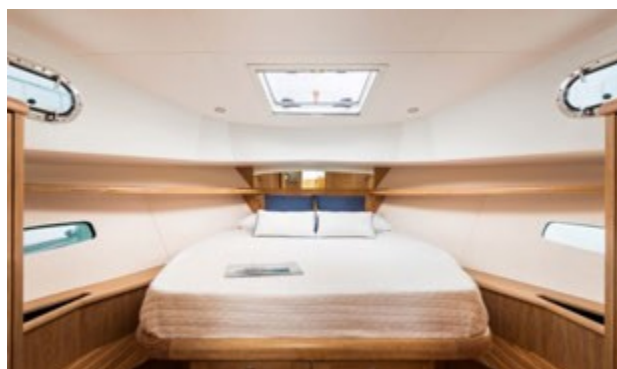
Its interior layout makes full use of every centimetre to ensure comfort on board. It features a bright saloon integrated with the galley at deck level, a spacious owner's cabin

forward, a second double guest cabin and a complete bathroom. All finished with noble woods and marine upholstery that create a warm, welcoming atmosphere of pure luxury.

On deck, it stands out for its **open cockpit protected by the Hard Top**, wide walk-around side decks that ensure complete safety when moving around, and a generous bow sunpad. This unit comes fully equipped to start cruising, including **bow thruster, electric anchoring system, latest-generation electronics and premium finishes** characteristic of the shipyard.

**Last new unit available for immediate delivery.** As it is currently at the shipyard facilities and has never touched the water, it is a unique and unrepeatable opportunity to acquire a brand-new boat, with full warranty and ready to be transported to its destination port without waiting lists.

GALLERY



## GENERAL DATA

### MAIN SPECIFICATIONS

<b>SHIPYARD</b> SASGA YACHTS	<b>MODEL</b> MENORQUÍN 34HT	<b>LENGTH</b> 10,00
<b>BEAM</b> 3,80	<b>DRAFT</b> 1,10	<b>WEIGHT (kg)</b> 8500
<b>YEAR OF CONSTRUCTION</b> 2024	<b>YEAR OF FIRST REGISTRATION</b> -	<b>ENGINE BRAND</b> VOLVO PENTA
<b>NO. OF ENGINES</b> 2	<b>ENGINE HOURS</b> 0	<b>PROPULSION SHAFTS</b>
<b>POWER</b> 270 HP	<b>FUEL</b> DIESEL	<b>COLOUR</b> WHITE
<b>FUEL TANK</b> 650 L	<b>CABINS</b> 2	<b>BATHROOMS</b> 1
<b>FRESH WATER TANK</b> 350 L	<b>BERTHS</b> 12	<b>TOILET TYPE</b> ELECTRIC

### INTERIOR DECORATION

White pickled oak wood and cream striped flooring // Column and wall upholstery in off-white

### STANDARD EQUIPMENT

#### Exterior deck equipment

- Stainless steel railings and fender holders on the bow sides
- Double access hatch to the engine room
- Two stern cleats with stainless steel protection on the cap rail cover
- Stainless steel exterior hot and cold water shower on the bathing platform
- Stainless steel cassette-type bathing ladder
- Hatch above the owner's cabin
- Stainless steel fairleads with bow cleat
- Bow nose, spreader, cap rail and cockpit railings in Burmese teak wood
- Navigation lights on spreader and Hardtop
- LED lights in the cockpit under the Hardtop
- Stainless steel handrails above the bow sunpad and stern columns
- Bathing platform lined in teak
- Cockpit lined in teak
- Access gate to the bathing platform in Burmese teak wood
- Access hatches to the anchor locker
- Deck fillers for fuel, fresh water and black water discharge
- Fresh water outlet in the anchor locker
- Pressurised water outlet aft

**WHEELHOUSE**

- General lighting and night navigation lights
- Pilot seat for 1 person
- Galley in the wheelhouse
- Storage drawer under the pilot seat
- Convertible dinette cushion into an additional berth
- Magnetic compass
- Main 12 V and 220 V electrical panel
- U-shaped upholstered dinette with adjustable table
- Black and grey water indicator
- Windscreen wiper with fresh water pump
- Storage unit to starboard
- Upholstered sofa to port with storage drawer
- Steering wheel
- Complete engine controls and gauges
- Four-leaf varnished iroko wooden doors for access to the wheelhouse, with curtains
- Radio with speakers
- 12 V power socket
- Side windows with curtains
- Forward windows with curtains

**MANOEUVRING**

- Bow thruster
- Additional cleats
- Mooring lines

**GALLEY**

- Drawers for food and beverage storage
- Drawers for crockery, cutlery and miscellaneous items
- Two-burner gas hob with pan holder
- 130 l fridge / freezer
- Silestone marble worktop in off-white
- Single-bowl stainless steel sink with single-lever tap
- LED ceiling lights
- Wooden furniture
- 220 V power socket

**ELECTRONICS / ELECTRICAL SYSTEM**

- GPS / Depth sounder / Raymarine 12 RV plotter
- Autopilot
- VHF Radio 91
- Horn
- Digital chain counter
- Battery monitor
- Victron Energy 12/3000

#### **PRE-INSTALLATION**

- Generator pre-installation
- Air-conditioning pre-installation

#### **PROTECTIVE COVERS**

- White waterproof cover for sunpad cushions
- Exterior cover for wheelhouse windows (bow, stern, starboard and port)
- White micro-perforated camper awning aft